

# Important land auction in Samford

The internet is an extremely powerful tool and recently when looking for early land prices in Samford the following interesting item came up in the Courier Mail for April 7th, 1920.

### **Samford Railway Station Estate Saturday, April 24th at 2.30pm**

For sale by public auction at the ground.

There are 74 beautiful residential sites in the estate which is the absolute pick of the Samford district.

The land is high with a beautiful easterly aspect, having a full view of the surrounding ranges and farms.

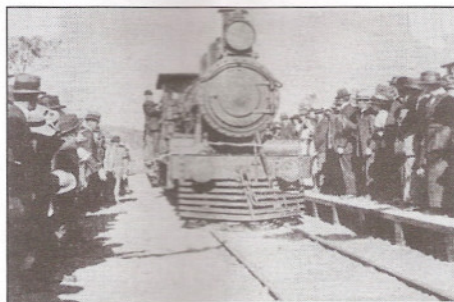
The property adjoins the Samford Railway Station and will form the nucleus of what must be an important township in the future as there is no other district within 100 miles of Brisbane which has made such progress since the advent of the railway.

**TERMS:** 1/3 cash, balance over 5 years, with 6% interest added. A McKeen auto car will leave Central Railway Station at 12.50pm and return from Samford at 6.00pm.

Tickets available at our office after Wednesday, 21st April.

Charlton, Elliott & Co Auctioneers, Queen Street.

The McKeen auto cars were a single carriage train made by the McKeen Car Company in Omaha. These auto cars had a range of power sources and although it seemed that those in Brisbane would be steam powered, photographs suggest that was not the case. Can you imagine the scene? Soldiers returning from WW1 may have made this



*Official opening of the railway to Samford.  
(1918)*

journey looking for a cheap block of land. A few young couples seeking to avoid the rush and bustle of Brisbane may have looked for their paradise in the wilds of Samford.

There were probably also a few smiling developers sitting in this auto car as it swept down the range to Samford Station. Given the time spent in Samford that Saturday afternoon I suspect the hotel may have also had a brisk trade with the visitors from the city.

It would be possible to ascertain who purchased blocks at the auction but title searches take time.

This auction must have been quite a success as seven months later on November 20th, 1920 the balance of the Samford Railway Station Estate went to auction. The auctioneers announced that "38 valuable township sites" were still available in this "popular estate" which had previously been owned by F K Fitzgerald Esq. The purchase terms were improved for this auction as cash deposits had been dropped from one third to one fifth in cash.

Various members of the Fitzgerald family owned land in the Samford area and this estate seems to have been to the east of John Scott Park; bordered by the now Samford Road and possibly running into part of Baden Powell Park.

Thank you to Margaret Hickey and Eileen Kemp of the Samford Museum for discussions.

**Brian Hansford**

## Police Report

On 1st March, an electric planer, gas powered framing gun, nuts, bolts and paperwork were stolen from a motor vehicle at the Samford Primary School.

There were two break and enters reported on 8th and 10th March. Both were in Vaucluse Close, Samford Valley.